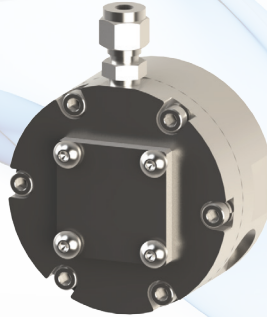


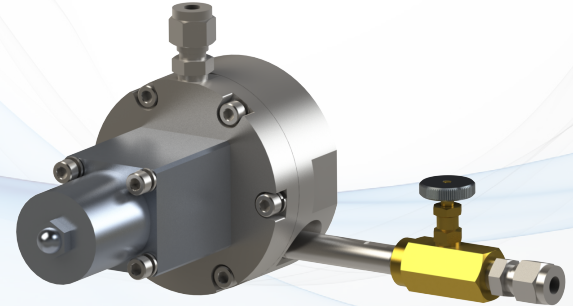
PRE-CONDITIONING ACCESSORIES



DEMISTER



**ANALYZER
GUARDIAN**



**ANALYZER GUARDIAN
with REGULATOR**

EFFECTIVE, MAINTENANCE-FREE PROTECTION FOR YOUR GAS ANALYZER

Protecting your Gas Analyzers from harsh pipeline contaminants is essential for a reliable, accurate, maintenance free installation.

Pipeline gas contains varying levels of hot compressor oil vapor, glycol and water vapors that can condense within critical Gas Analyzers, causing errors or failure. Most competitive solutions require constant maintenance and draining drip pots, coalescing filters or bypassing significant amounts of gas to drain contaminants.

Intermittent slugs of liquid getting pushed through the pipeline also result expensive Analyzer repairs. The **DEMISTER** and **ANALYZER GUARDIAN** combo solves these issues for maintenance-free reliability.

DEMISTER

The **DEMISTER** is a compact, vertically mounted device that attaches directly to the pipeline. As the hot sample gas passes through the **DEMISTER**, it is rapidly cooled, causing the compressor oil, glycol, and water vapors to condense, coalesce and drain back into the pipeline. This high level of protection for your Analyzers is achieved without the need for power, venting/bypassing gas or periodic maintenance.

ANALYZER GUARDIAN

The **ANALYZER GUARDIAN** provides simple virtually maintenance-free protection against liquids and particulates entering a Gas Analyzer, without labor and expense drip pots or coalescing filters. Its unique membrane and stainless-steel deflector disk combination work as a barrier against liquids while allowing only gas to reach the Analyzer.

ANALYZER GUARDIAN with REGULATOR

The **ANALYZER GUARDIAN** is available with a direct coupled NeSSI-compliant regulator for high-pressure applications. This configuration provides the capability to reduce input pressure to the Analyzer from as high as 1500 psig.

KEY BENEFITS

- EXTENDS ANALYZER LIFE
- DRAINS CONTAMINANTS IN THE GAS
- MINIMIZES YOUR MAINTENANCE COSTS

PRECONDITIONING ACCESSORIES

DEMISTER

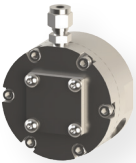


DIMENSIONS	3.0" Diameter x 12.0" Height (8 cm x 30 cm)
INLET/OUTLET CONNECTIONS	½" NPT
MATERIAL	Carbon Steel
MAXIMUM PRESSURE	1500 psig (103 bar) at 190°F (88°C)
PART NUMBER	5DEM06



The Analyzer Guardian and Demister are commonly installed as one system.

ANALYZER GUARDIAN

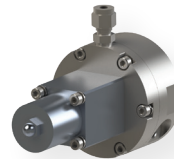


DIMENSIONS	3.0" Diameter x 2.8" Height (8 cm x 7 cm)
CONNECTIONS	Inlet Port: ½" NPT Output Port: ¼" compression fittings (6.4 mm)
MAXIMUM PRESSURE	1500 psig (103 bar)
PART NUMBER	5GRD02

LIQUID BYPASS ASSEMBLY FOR HEAVILY-SATURATED GAS	
PART NUMBER	4KIT11

OPTIONAL: Can be added to either Analyzer Guardian configuration

ANALYZER GUARDIAN with REGULATOR



DIMENSIONS	3.0" Diameter x 5.3" Height (8 cm x 14 cm)
CONNECTIONS	Inlet Port: ½" NPT Output Port: ¼" compression fittings (6.4 mm)
MAXIMUM INLET PRESSURE	1500 psig (103 bar)
OUTLET PRESSURE	0 – 25 psig (0 – 1.7 bar)
PART NUMBER	5GRD01

Designed for applications with pipeline pressure > 150 psig (10.3 bar)

IMPORTANT (for REGULATOR CONFIGURATIONS)

The Supply Pressure Effect (SPE) will be observed when this configuration is used. At the maximum inlet pressure of 1500 psig, the outlet pressure will be 25 psig. **However, at an inlet pressure <1500 psig, the outlet pressure will > 25 psig.** The SPE states that *for every 100 psig decrease in inlet pressure, the outlet pressure will increase 1.40 psig.*

TYPICAL INSTALLATION



ANALYZER GUARDIAN

DEMISTER

The Analyzer Guardian and Demister should be installed in the sample line upstream of the Analyzer. Both should always be installed vertically.