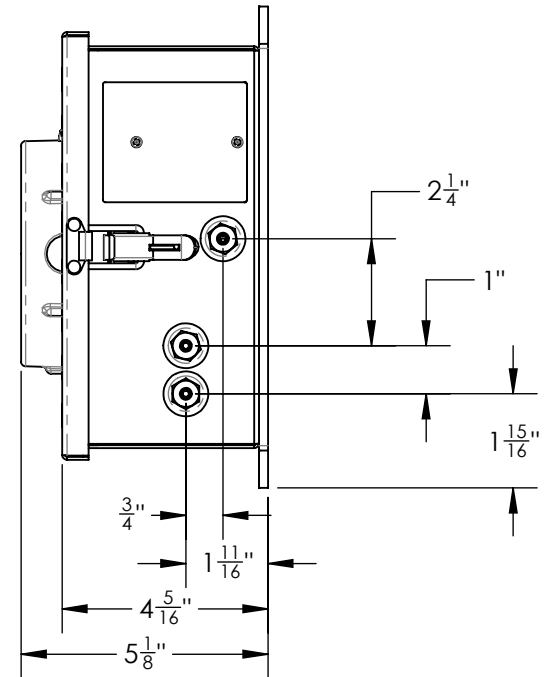
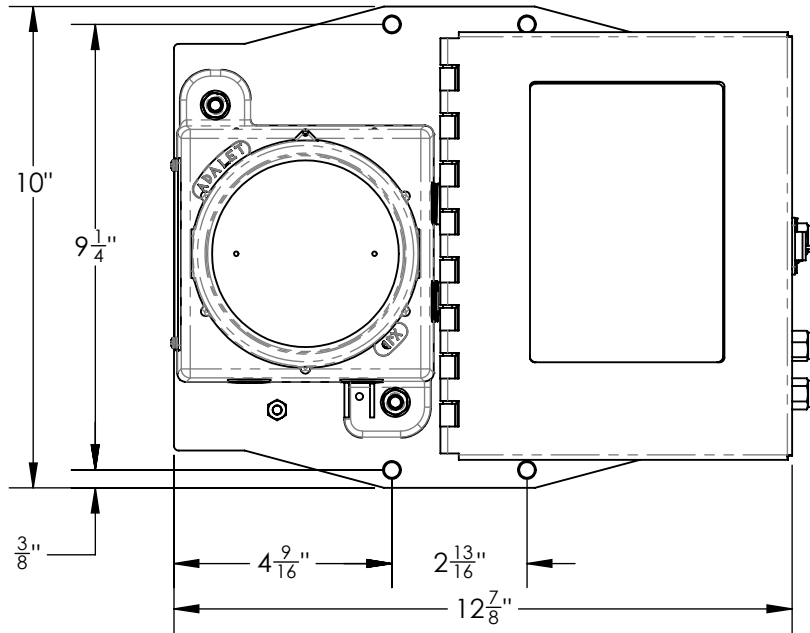


2

1

NOTES: UNLESS OTHERWISE SPECIFIED

REVISIONS				
ZONE	REV.	DESCRIPTION	DATE	APPROVED
	A	NEW RELEASE	03/23/20	JR



UNCONTROLLED

**PROPRIETARY AND CONFIDENTIAL**  
 THIS DOCUMENT IS THE PROPERTY OF  
 ADVANCED MICRO INSTRUMENTS INC. AND IS  
 CONVEYED WITH THE EXPRESS CONDITION THAT  
 IT AND THE INFORMATION CONTAINED IN IT ARE  
 NOT TO BE USED, DISCLOSED, OR REPRODUCED  
 IN WHOLE OR IN PART, FOR ANY PURPOSE  
 WITHOUT THE EXPRESS WRITTEN CONSENT OF  
 ADVANCED MICRO INSTRUMENTS INC., AND  
 THAT NO RIGHT IS GRANTED TO DISCLOSE OR SO  
 USE ANY INFORMATION CONTAINED IN SAID  
 DOCUMENT.

UNLESS OTHERWISE SPECIFIED:		NAME	DATE	<b>Advanced Micro Instruments, Inc.</b>		
DIMENSIONS ARE IN INCHES		DRAWN	JR			03/23/20
TOLERANCES:		CHECKED	-			-
FRACTIONAL: $\pm 1/32$		ENG APPR.	-			-
ANGULAR: $\pm 1^\circ$		MFG APPR.	-			-
.x $\pm 0.050$		QA APPR.	-	-	TITLE: 210BX, 2010BX, & 3010BX Installation	
.xx $\pm 0.010$		THIRD ANGLE PROJECTION				
.xxx $\pm 0.005$					COMMENTS:	
BREAK EDGES AND REMOVE BURRS: R.005/.005X45*		E-FILE 4DOD3006				
SURFACE FINISH: $\checkmark$ 64					SIZE <b>A</b> DWG. NO. 4DOD3006 REV <b>A</b>	
INTERPRET GEOMETRIC TOLERANCING PER: ANSI Y14.5M-1994		SCALE: 1:4 WEIGHT: SHEET 1 OF 1				
MATERIAL: -					FINISH: -	
FINISH: -						

2

1