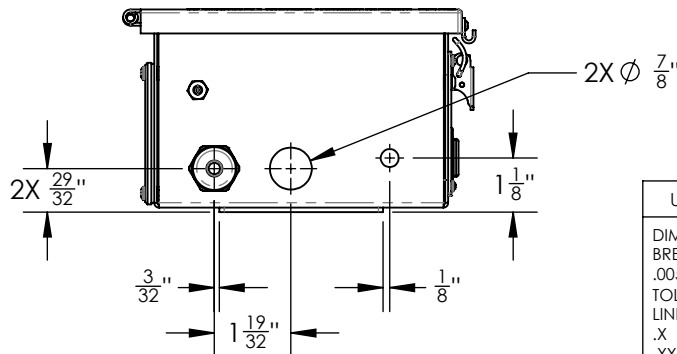
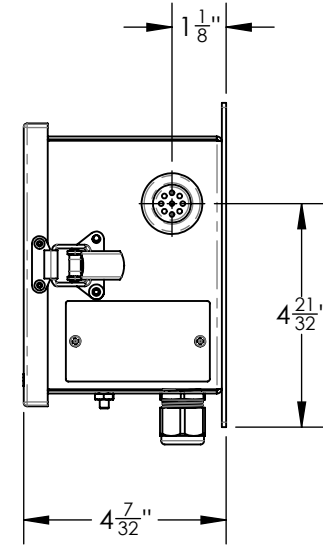
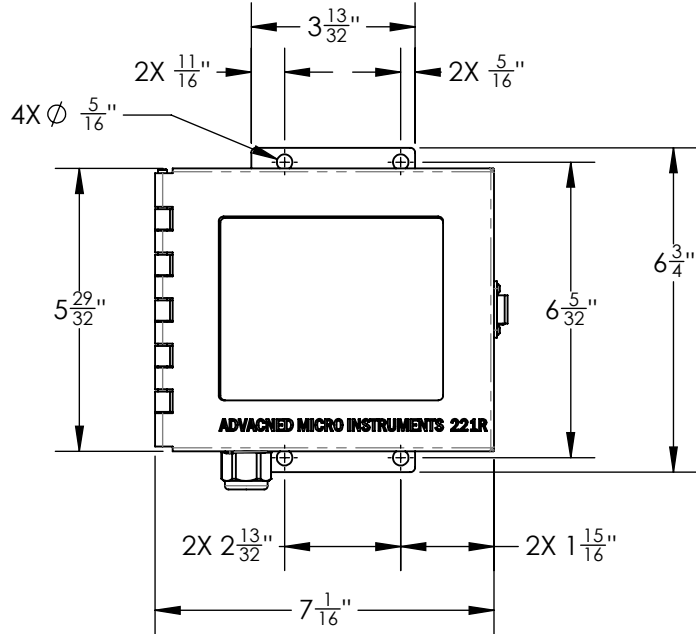


2

1

NOTES: UNLESS OTHERWISE SPECIFIED

REVISIONS					
ZONE	REV.	DESCRIPTION	ECO	DATE	APPROVED
	A	INITIAL RELEASE	10578	9/20/2021	JR
	B	ADDED SHEET 2. ADDED CONDUIT DIMENSION	10823	5/2/2024	JR



**PROPRIETARY AND CONFIDENTIAL**  
 THIS DOCUMENT IS THE PROPERTY OF  
 ADVANCED MICRO INSTRUMENTS INC. AND IS  
 CONVEYED WITH THE EXPRESS CONDITION THAT  
 IT AND THE INFORMATION CONTAINED IN IT ARE  
 NOT TO BE USED, DISCLOSED, OR REPRODUCED  
 IN WHOLE OR IN PART, FOR ANY PURPOSE  
 WITHOUT THE EXPRESS WRITTEN CONSENT OF  
 ADVANCED MICRO INSTRUMENTS INC. AND  
 THAT NO RIGHT IS GRANTED TO DISCLOSE OR SO  
 USE ANY INFORMATION CONTAINED IN SAID  
 DOCUMENT.

UNLESS OTHERWISE SPECIFIED:	NAME	DATE
DIMENSIONS ARE IN INCHES	DRAWN	JR 09/20/21
BREAK EDGES AND REMOVE BURRS: .005/.005X45°	CHECKED	-
TOLERANCES:	ENG APPR.	-
LINEAR: .X ± 0.050 .XX ± 0.010 .XXX ± 0.005	MFG APPR.	-
FRACTIONAL: ± 1/32 ANGULAR: ± 1° SURFACE FINISH: 64/√	QA APPR.	-
INTERPRET GEOMETRIC TOLERANCING PER: ANSI Y14.5M-1994	THIRD ANGLE PROJECTION	
MATERIAL: -	COMMENTS:	
FINISH: -		

**Advanced Micro Instruments**

TITLE:  
Model 221R, Basic, USB

SIZE	DWG. NO.	REV
<b>A</b>	<b>4DOD0600</b>	<b>B</b>
SCALE: 1:4	WEIGHT:	SHEET 1 OF 2

2

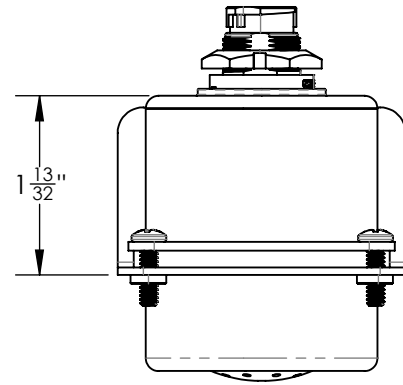
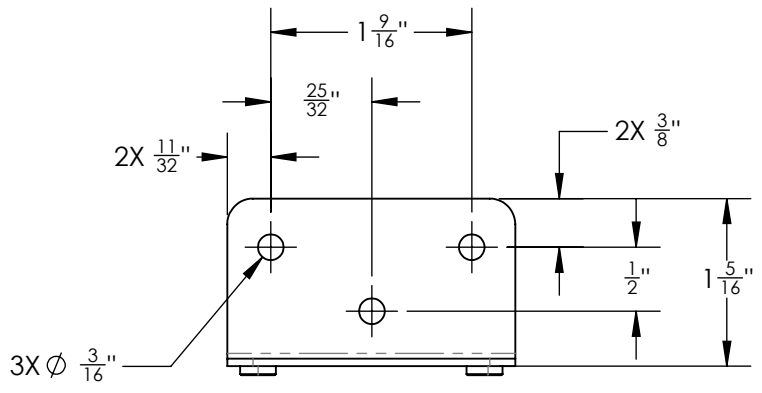
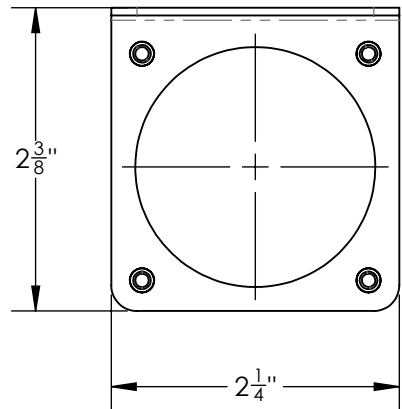
1

2

1

B

B



A

A

2

1

UNLESS OTHERWISE SPECIFIED:		NAME	DATE
DIMENSIONS ARE IN INCHES BREAK EDGES AND REMOVE BURRS: .005/.005X45°		DRAWN	JR 09/20/21
TOLERANCES:		CHECKED	-
LINEAR:	FRACTIONAL: ± 1/32	ENG APPR.	-
.X ± 0.050	ANGULAR: ± 1°	MFG APPR.	-
.XX ± 0.010	SURFACE FINISH:	QA APPR.	-
.XXX ± 0.005	64/√		
INTERPRET GEOMETRIC TOLERANCING PER: ANSI Y14.5M-1994	THIRD ANGLE PROJECTION		
MATERIAL:	COMMENTS:		
FINISH:			

<b>Advanced Micro Instruments</b>		
TITLE: Model 221R, Basic, USB		
SIZE	DWG. NO.	REV
<b>A</b>	<b>4DOD0600</b>	<b>B</b>
SCALE: 2:3	WEIGHT:	SHEET 2 OF 2